

MONTHLY MEMBERSHIP PROGRESS REPORT

District 325 M

Results as of: 4/30/2026

GMT:

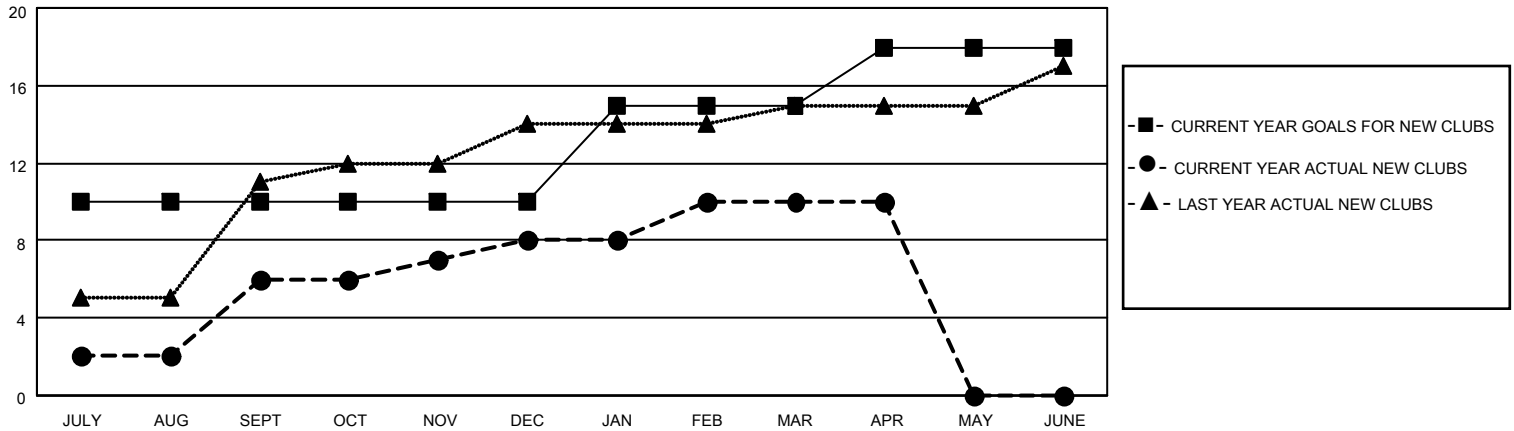
LOCATION NEPAL

GMT CA

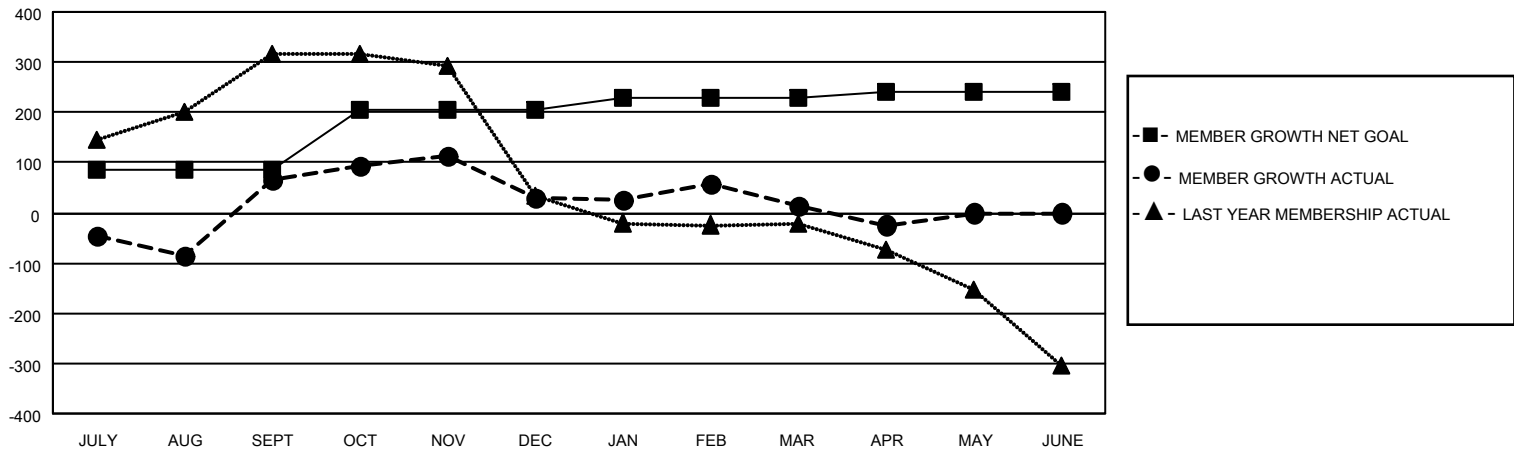
Clubs			
RESULTS FOR 2025-2026			
QUARTER	NEW CLUB GOAL	NEW CLUBS	DROPPED CLUBS
JULY/AUG/SEPT	10	6	4
OCT/NOV/DEC	0	2	0
JAN/FEB/MAR	5	2	0
APR/MAY/JUNE	3	0	0

Members			
RESULTS FOR 2025-2026			
QUARTER	MEMBER GROWTH NET GOAL	MEMBER GROWTH ACTUAL	DROPPED MEMBERS ACTUAL (including transfers)
JULY/AUG/SEPT	85	251	161
OCT/NOV/DEC	120	111	141
JAN/FEB/MAR	25	83	71
APR/MAY/JUNE	10	4	39

GOALS AND ACTUAL NEW CLUBS CUMULATIVE



GOALS AND ACTUAL MEMBERS CUMULATIVE



DROPPED CLUBS: 4	57 CLUBS OF 154 ADDED 1 OR MORE NEW MEMBERS	<u>GENDER DISTRIBUTION</u>	
		MALE	2,279 (68.05%)
<u>DROPPED MEMBERS</u>		FEMALE	1,067 (31.86%)
DECEASED	2	TOTAL FAMILY UNIT MEMBERS	
CLUB CANCELLED	46	3,060	
OTHER	363	FAMILY MEMBERS PAYING HALF DUES	
TOTAL	411	2,310	

[CLICK HERE FOR CUMULATIVE MEMBERSHIP DATA](#)